

# code

---

## C004053\_02

### Reader Download Utility Instructions

**MASTER** DATE: 2008-03-24  
COGE: *MA*

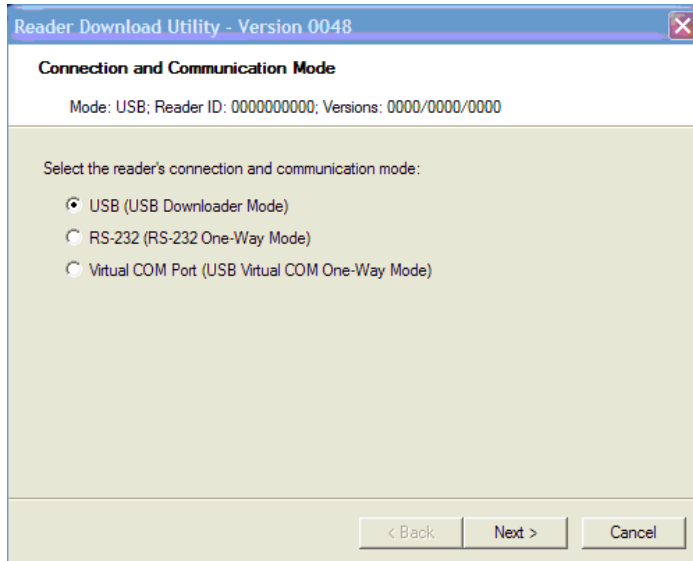
*Signature matrix may be adjusted to accommodate all effected departments.*

Reviewed By	Role	Signature	Date
Tod Cook	Quality Control	<i>Tod Cook</i>	24 MAR 2008
Mike McArthur	Test Engineering	<i>Mike McArthur</i>	3/24/08
Ron Simpson	Application Engineering	<i>Ron Simpson</i>	3/24/08
Kerri Humphreys	Marketing	<i>Kerri Humphreys</i>	3/24/08

Note: If document has not been stamped "MASTER" it is not released.

## Reader Download Utility (RDU) for Upgrading Firmware

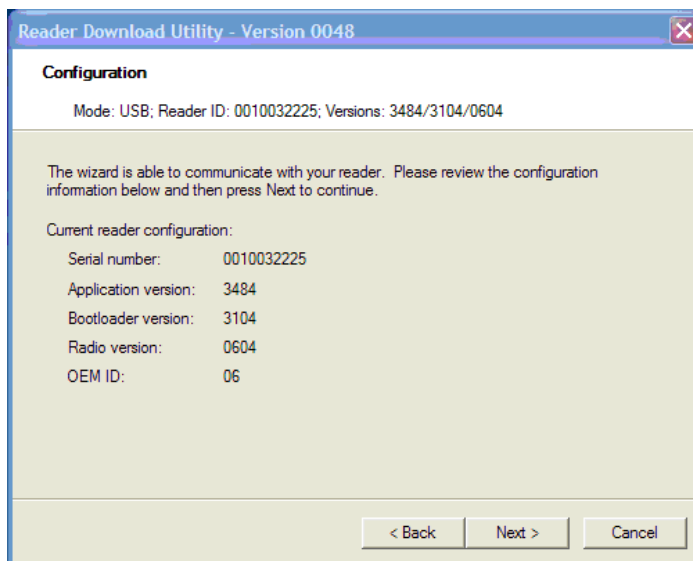
1. Unzip and run the file **C002640\_0048\_readerDownloadUtility.exe**. You will see this screen:



2. Scan the **USB Downloader Code** (M133\_01), followed by the **Save Settings Code** (M188\_02):



3. Attach the Reader to the PC using the provided USB cable. Select "**Next**". The reader will now connect to the PC and you will see this screen:



**NOTE:** Your reader must already be using the following versions of Firmware and Bootloader in order to use the Reader Download Utility:

- CR2/CR3 Firmware: 2016 (or greater)
- CR1200 Firmware: any version
- CR2/CR3 Bootloader: 2170 (or greater)
- CR1200 Bootloader: any version

If your current Bootloader version does not match the second set of 4 numbers, V003153\_3266\_boot.bdl in the '.bdl' file, scan the following **Bootloader Mode Code\*** (M692\_01).

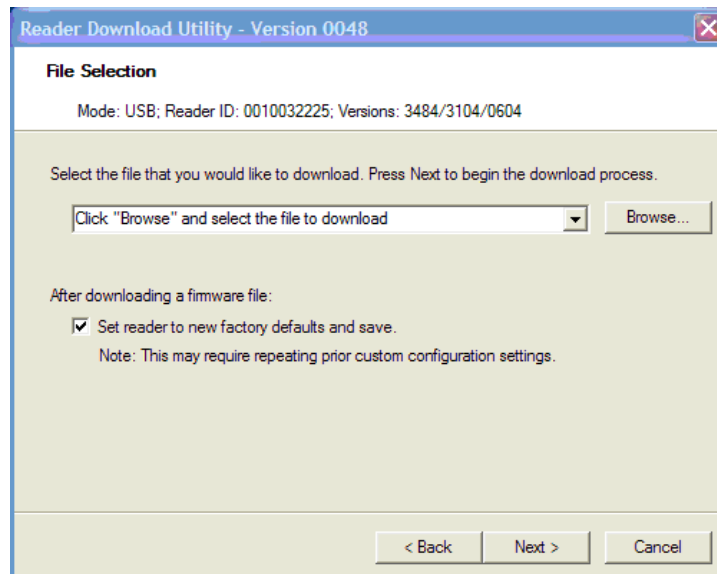
## Bootloader Mode



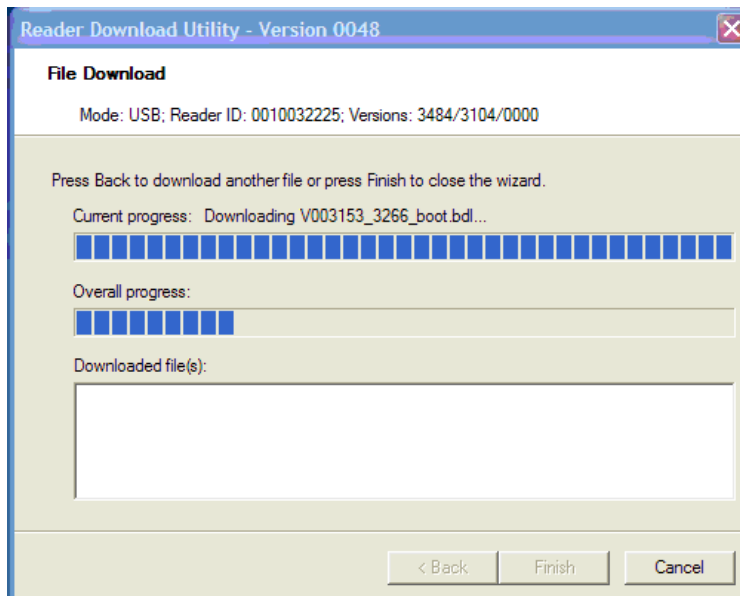
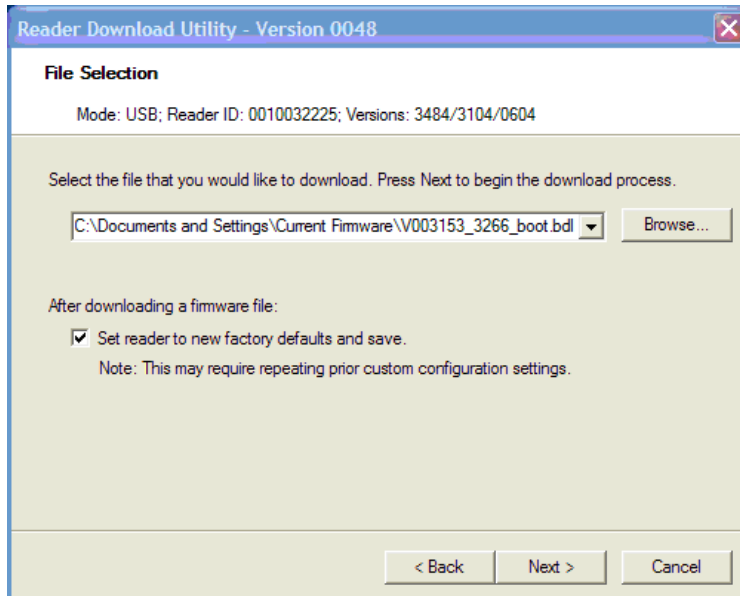
M692\_01

*\*Older versions of firmware may require the reader to manually be place in Bootloader mode. See Appendix A for instructions.*

4. Select "**Browse**" and find the file named **V003153\_3266\_boot.bdl**. If firmware is earlier than 3000, find the file name **C002200\_3266\_boot\_2422\_upboot\_ForPreVer12Hardware.dl**.



**NOTE:** Prior to downloading a firmware file, Code Corp recommends checking the box to the lower left saying "Set reader to new factory defaults and save".



5. Select **"Next"** to update the Bootloader version before updating the Firmware file.

If you have the updated Bootloader version on your reader, or after a successful download for the current Bootloader file, select **"Back"**, and scan the **Bootloader Mode Code\*** (M692\_01).

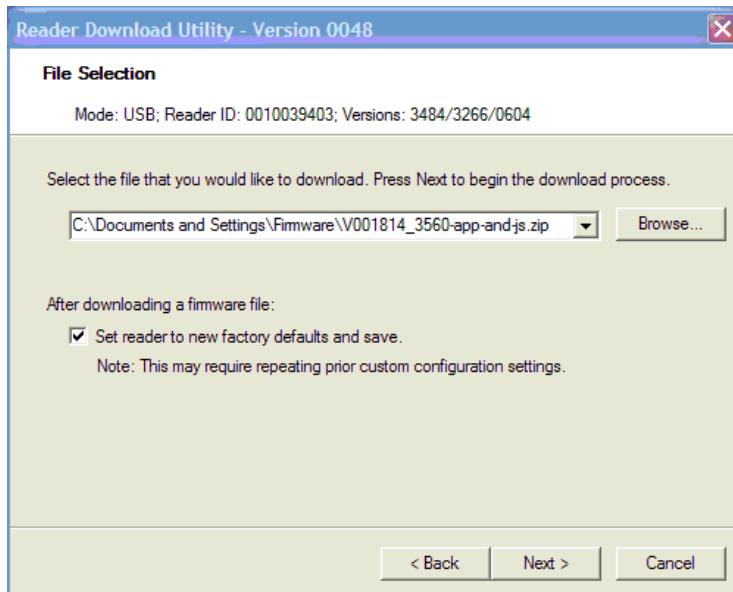
#### Bootloader Mode



M692\_01

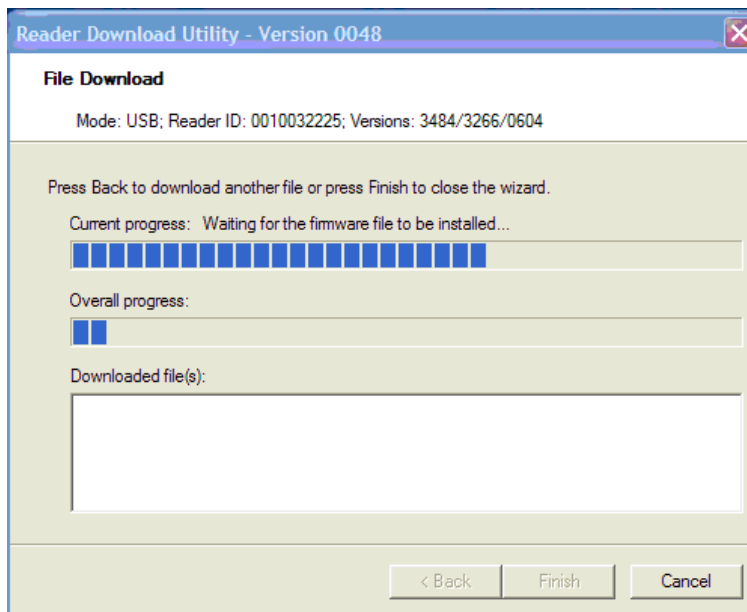
\* Older versions of firmware may require the reader to manually be place in Bootloader mode. See Appendix A for instructions.

6. Select “**Browse**” in the following screen to find the file you would like to download to the reader. Locate the zipped folder called **V001814\_3560-app-and-js.zip**.

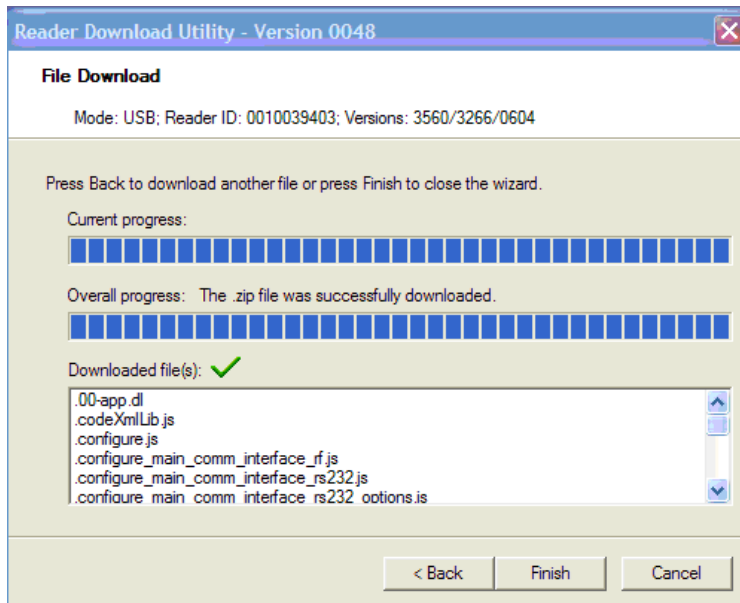


7. Please select “**Next**”.

You can now see the download progress of the File Download Wizard Window:

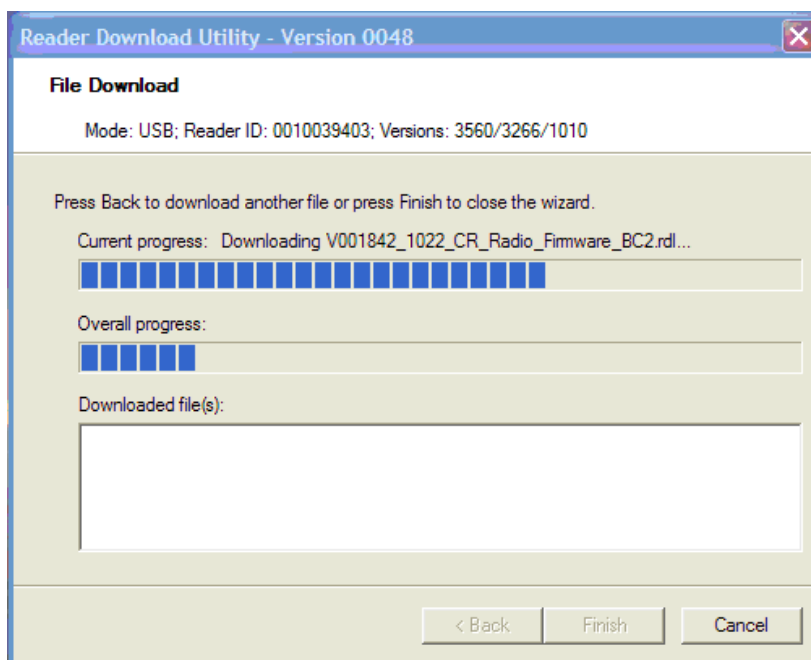


Once the file download is complete, a message is displayed indicating download completion of the Application file:



8. If reader contains a Bluetooth Radio, select **"BACK"** and **"Browse"** for the file named **C003906\_1022\_CR\_Radio\_Firmware\_Combined.zip**, else go to step 9.

Select **"Next"** to update the Radio Firmware. The \*.zip file will open and load the proper files onto the reader.



9. Finally, scan the following codes:

**Clear all CodeXML Rules**



M052\_01

**Reset to USB Factory Defaults**



M049\_03

**Save Settings**



M188\_02

**Your reader is now upgraded to the latest firmware from Code Corporation.**

**NOTE:** Remember to reload any custom codes or other programming codes required for your specific application at this time.

**Your Code Reader is now ready to scan.**

## **Appendix A**

To manually put a CR2 and/or CR3 into Bootloader Mode:

1. Remove the battery.
2. Reinsert the battery while holding down both red trigger buttons simultaneously.
3. As soon as the unit beeps, release the buttons.

Once in boot mode, both LEDs on the Reader will be on. Either both will be red or one will be red and the other green. The green LED on the right of the CR2/3 indicates USB mode and red indicates RS232/Serial mode. If the right LED is red, press one of the trigger buttons to change the LED to green and into USB mode.