

Disabling Security & Authentication

Belkin Bluetooth Manager Software Version 4.0.1.2401

In version 1.4.2.10 of Belkin Bluetooth Manager software, you must disable the authentication feature to connect a Code Reader 2.0. Please follow the steps below:

Note: Newer versions of Belkin software or hardware may not be compatible with older versions.

- 1 Double click on the Bluetooth icon in the system tray (figure 1). In the My Bluetooth Places screen, select Advanced Configuration (figure 2).

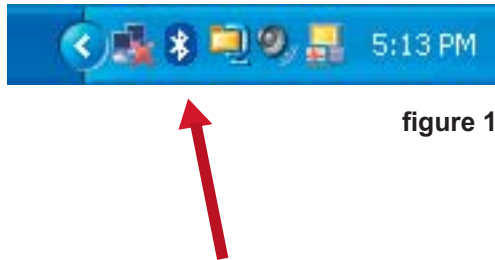


figure 1

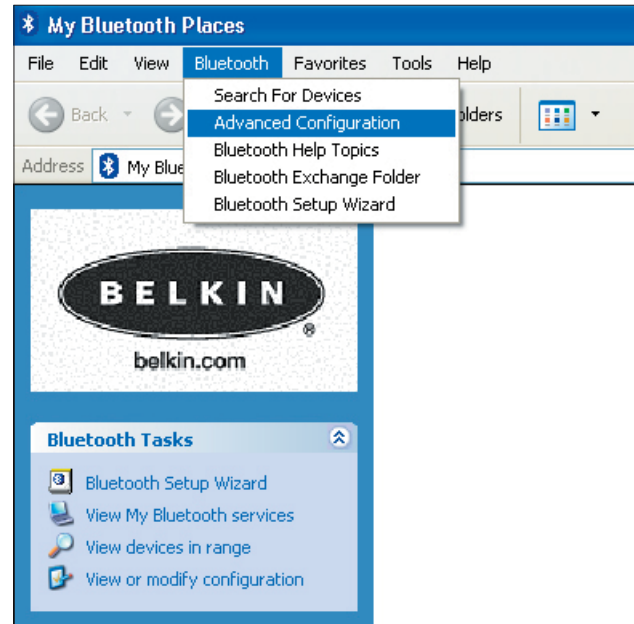


figure 2

- 2 Select the Local Services tab and double click on the Bluetooth Serial Port (figure 3). Under the General tab unselect the Secure Connection box (figure 4). This disables the encryption feature and allows the CR2 to connect to the Bluetooth adapter. Click Apply.



figure 3

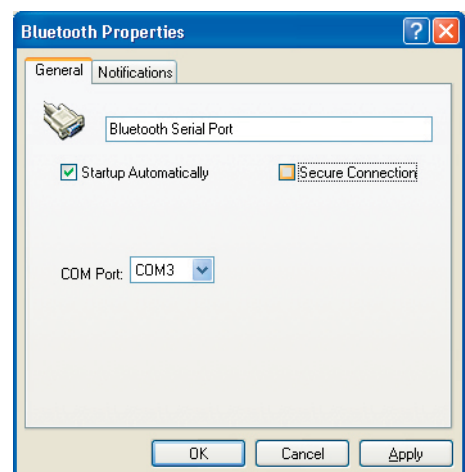


figure 4

- 3 Your Local Service Bluetooth Serial Port profile should now read “Not Required” (figure 5).

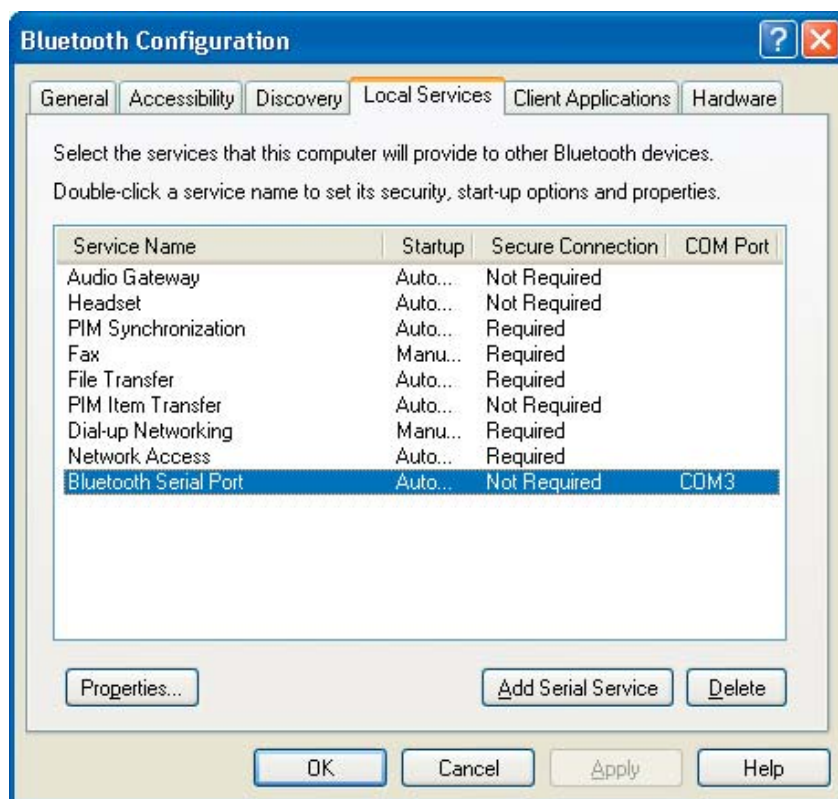


figure 5

- 4 Open the “Accessibility” tab and verify that “All Devices” are allowed to connect (this is the default setting). You should now be able to connect your Code Reader 2.0.

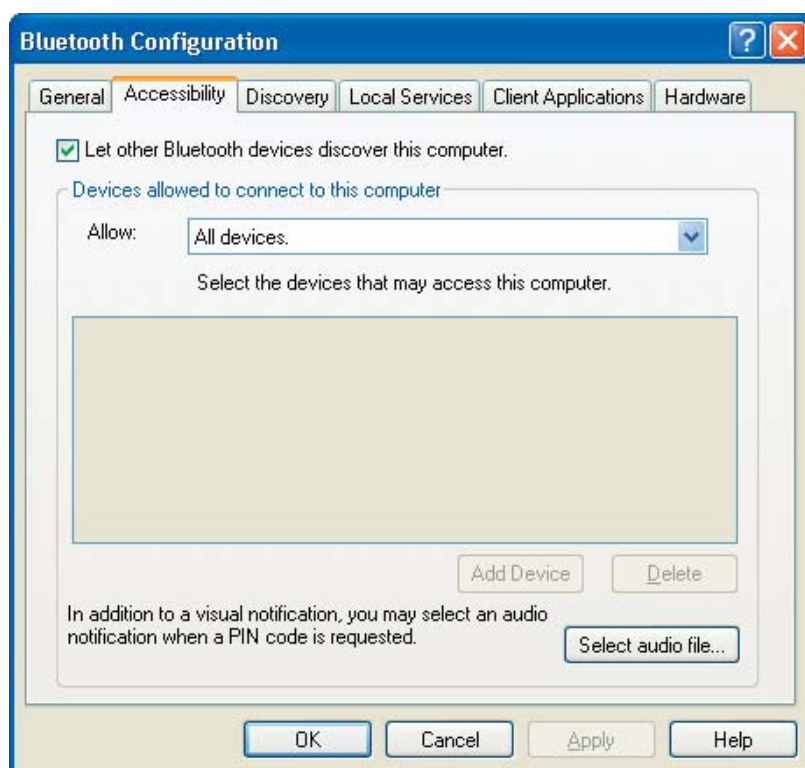


figure 6