

OPN2005 Bluetooth Pairing Instructions

How to pair the OPN2005 to an iOS device

This application note shows a number of screen shots that you may see when attempting to pair your OPN2005 Bluetooth device with an iOS device.

Contents

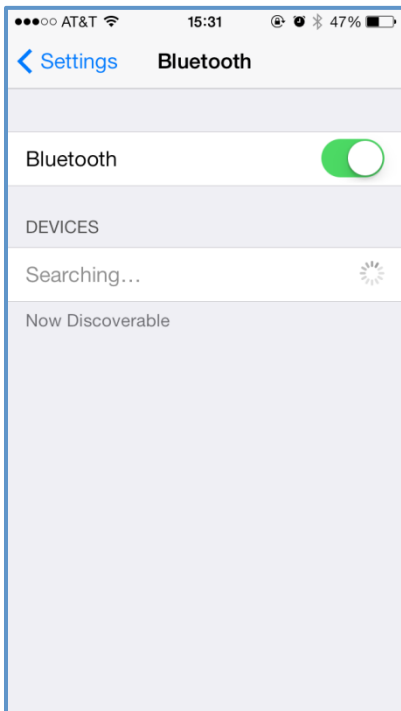
How to pair the OPN2005 to a iOS device	1
OPN2005 Not found or not Pairing:	2
OPN2005 is found:	3
OPN2005 is found, but not connecting:	4
Forgetting the Device:	5
Reset the OPN Device:.....	5



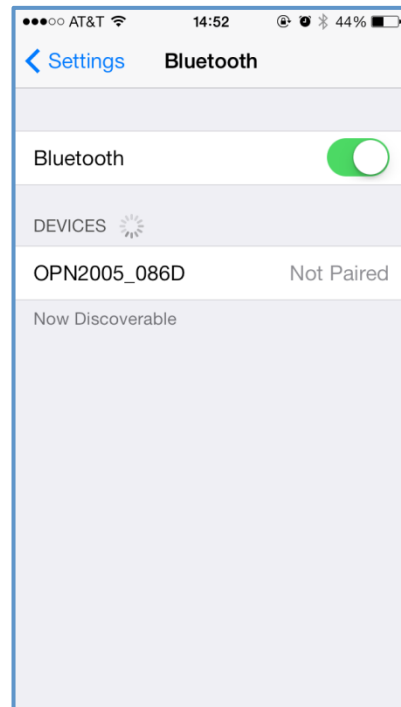
OPN2005

OPN2005 Not found or not Pairing:

If the device is not showing up or is showing up as not paired:



It's searching but not found



It's found, but not pairing

Steps to do:

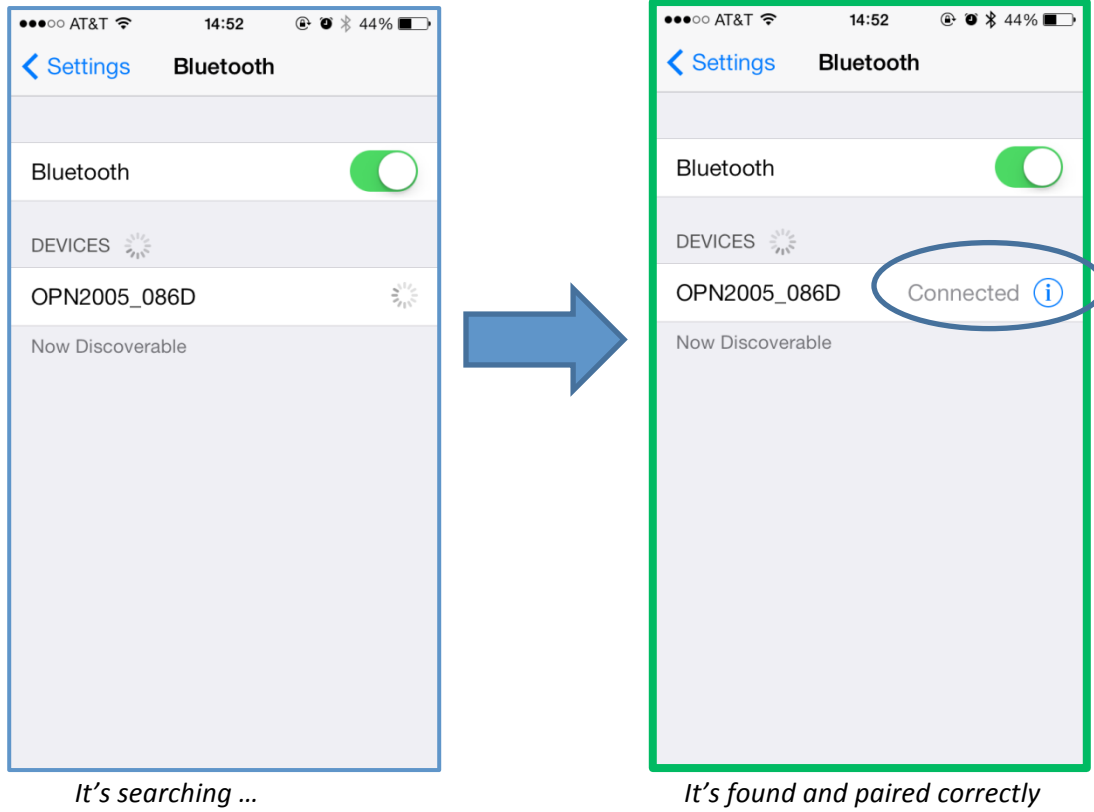
1. Hold down clear/function key (smaller of the two buttons) until LED flashes blue



2. Tap on the **OPN2005** line item within the Bluetooth Settings devices listing (initially it will show up as a keyboard)

OPN2005 is found:

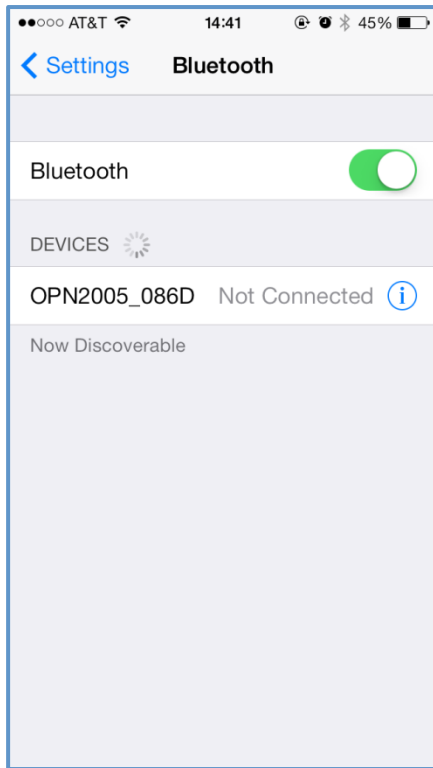
If the OPN device is showing up, it should pair up:



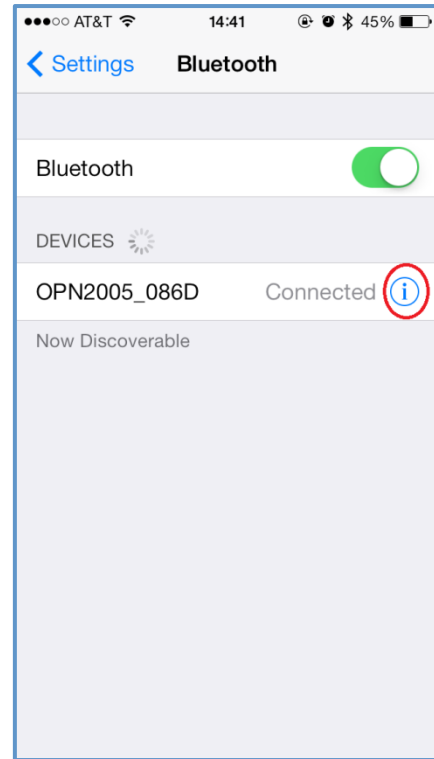
A connection should take place and the screen should display “Connected” when paired.

OPN2005 is found, but not connecting:

If the OPN device is showing up, but it still will not connect:



OR..



Steps to do:

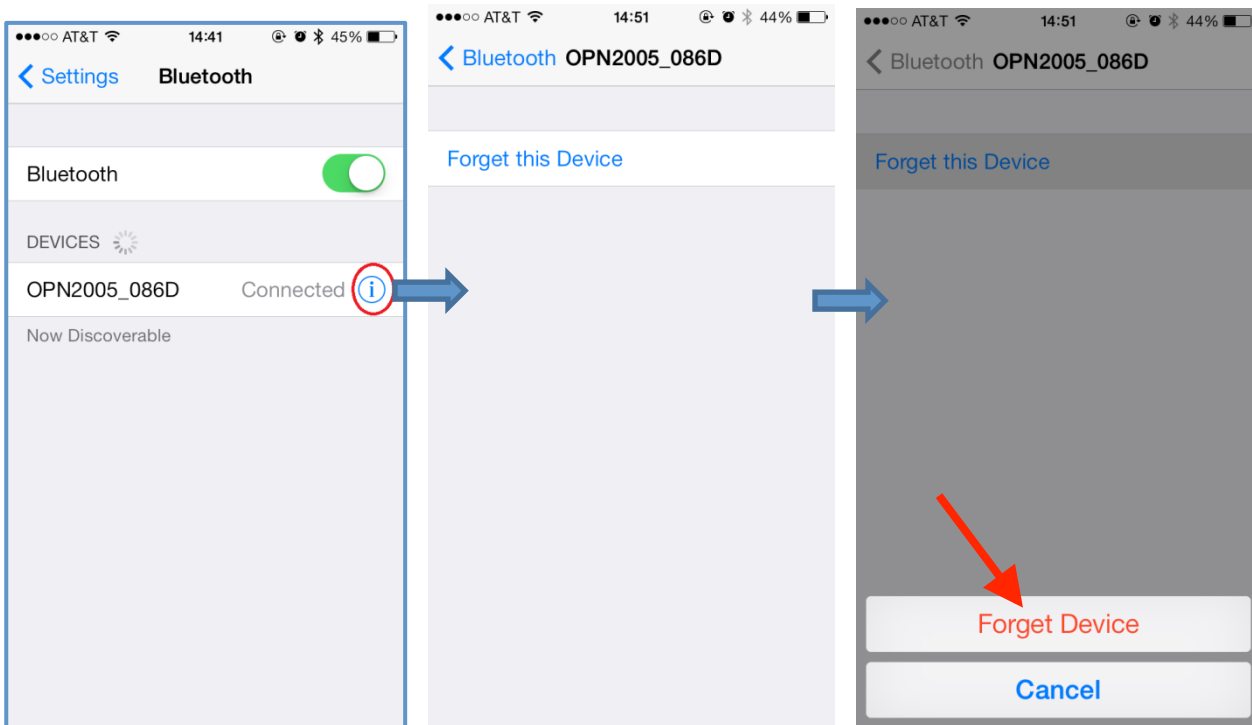
1. Hold down scan/trigger button (larger of the two buttons) until LED flashes blue...wait until connected OR...



2. Forget device by tapping on the blue (i) at the OPN2005 line item...

Forgetting the Device:

Sometimes it may be necessary to forget the device in memory and start fresh



Steps to do:

1. Forget device by tapping on the blue (i) at the OPN2005 line item...
2. Click on "Forget Device"
3. Then re-pair the device using the [Quick Start Guide](#) which came with your device.

Reset the OPN Device:

Should these steps not produce a connection, the OPN2005 device may benefit from an internal reset.

This is performed by holding down *both* the scan/trigger button *and* clear/function button for approximately 25-30 seconds (ignore any LED flashes or tones for this duration). Then attempt the repairing processes.

