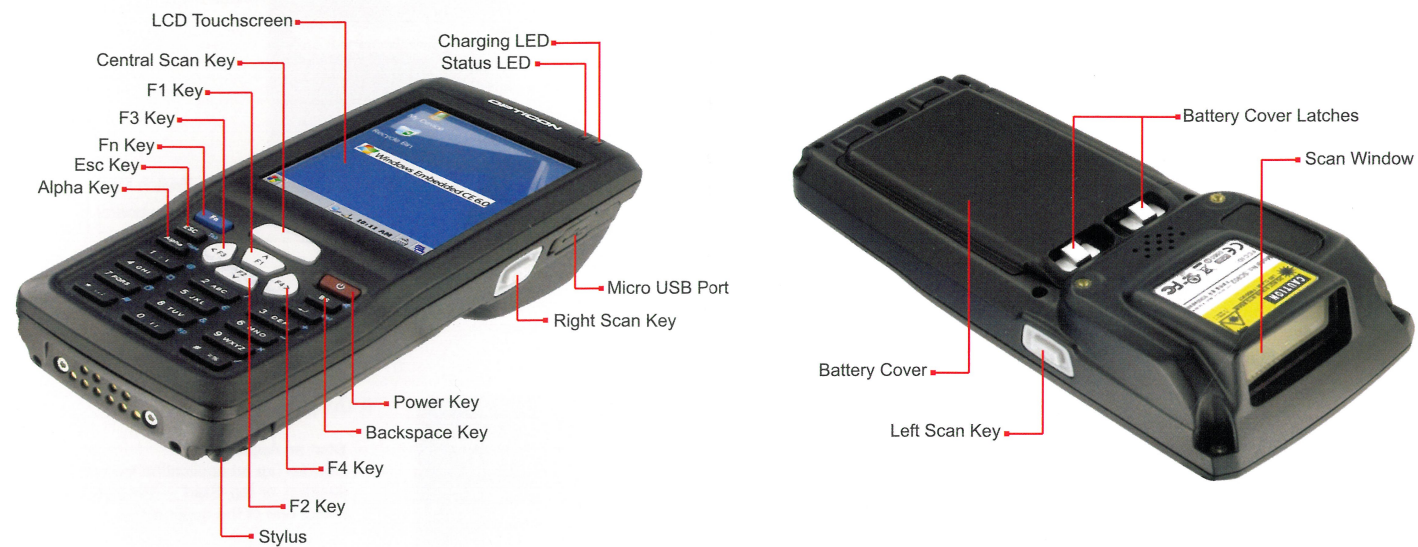


Inside the box



Overview



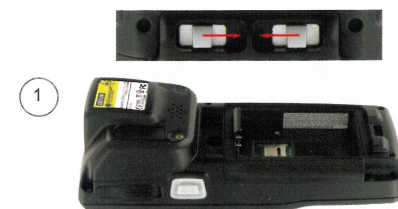
Installation Guide

October 2011

Before Getting Started

Installing the Battery Pack

Slide the Battery Cover Latches towards each other to unlock the Battery Cover. Lift the Battery Cover to reveal the Battery compartment.



Align the battery contacts on the Battery Pack with the contact pins in the H25. Gently place the Battery Pack with the label facing up.



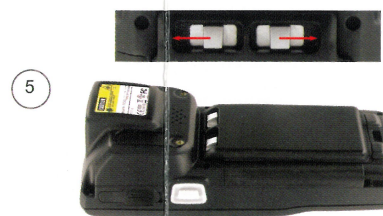
Push the Battery Pack down to fit it in place.



Place the Battery Cover by inserting it at the bottom of the H25 first.



Press the Battery Cover firmly and slide the Battery Cover Latches away from each other to secure the Battery Cover to the H25.



The H25 will power on when you finish installing the Battery Pack. Power off the device after touch screen calibration and charge the battery for at least 6 hours. The Charging LED will turn to green when battery is fully charged.

Charging / Connecting to PC using USB



The Micro USB port on the side of the H25 is used for charging the device as well as connecting it to a PC.



Lift the rubber cover of the Micro USB port and connect one side of the Micro USB Cable to the H25. Connect the other side to the AC adapter and connect the AC adapter to a wall socket to start charging the H25.



If you use the Micro USB Cable to connect the H25 to a PC you can set up a data connection as well as charge the terminal.



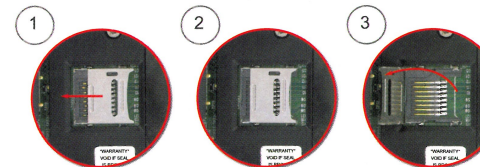
Before using the H25, the Battery Pack should be fully charged for at least 6 hours. You can use the H25 terminal for charging the Battery Pack. Alternatively you can use the CRD25 (sold separately).



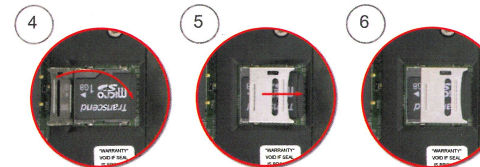
Only use original H25 AC Adapter for charging the device. Using another AC Adapter can cause damage to the device and injury to the user.

Placing a MicroSD memory card

The MicroSD slot is located underneath the Battery Pack. To access the MicroSD slot, the Battery Cover and the Battery Pack have to be removed. When placing or removing a MicroSD card take care not to damage the MicroSD slot or your MicroSD card.



1. Gently slide the metal bracket in the direction shown in the picture.
2. Gently lift the metal bracket to open the MicroSD slot.
3. Take note of the contact pins and the shape of the MicroSD slot. Place the MicroSD card (only one correct orientation!)



4. Gently fold the metal bracket down, make sure it fits neatly.
5. Press down the metal bracket and the MicroSD card and gently slide it to the locked position as shown in the picture.
6. Done! Place the Battery Pack and Battery Cover.

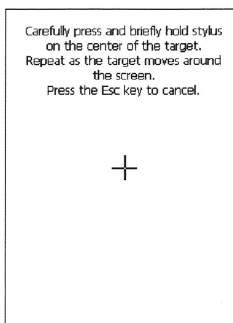
Getting Started

When starting the H25 for the first time it is a good idea to familiarize yourself with the features and settings of the device. This part of the guide covers the most common settings and features you will access while using the H25.



1. Initial Boot Up

The initial boot up screen will be displayed when you insert the Battery Pack for the first time. Do not remove the Battery Pack when the system is at Initial Boot Up.



2. Calibrating Touch Screen

You will be asked to calibrate the Touch Screen when using the H25 for the first time. Hold the stylus and press on the center of each target as it moves around the screen.

If for any reason you want to recalibrate the Touch Screen navigate to 'Start' -- 'Settings' -- 'Control Panel' -- 'Stylus' -- 'Calibration' -- 'Recalibrate'.



3. Setting Up Wireless LAN

- Press 'Start' -- 'Programs' -- 'Controls' -- 'WLAN Manager' to open the Summit Client Utility.

- Go to the 'Main' tab, you can tap the 'Enable/Disable Radio' button to enable or disable the WLAN; make sure it is enabled.

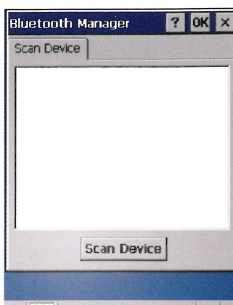
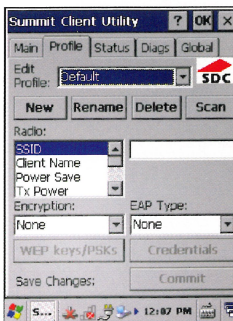
- Go to the 'Profile' tab; tap the 'Scan' button to scan for available networks in the vicinity.

- Select your preferred network and tap the 'Connect' button; confirm the pop-up to create a new SSID profile for the network you selected.

- In the next screen enter the encryption key for any secured network you are connecting to.

- Press 'Commit' to confirm and save the profile for your network.

- Go back to the 'Main' tab and select your newly made profile as the Active Profile to connect to the network.

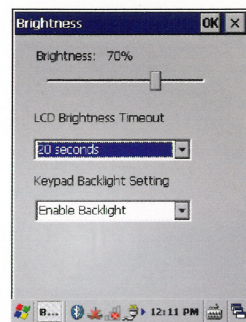


4. Bluetooth Device Properties

- Tap 'Start' -- 'Programs' -- 'Bluetooth' -- 'Bluetooth SPP manager' to enable the Bluetooth module.

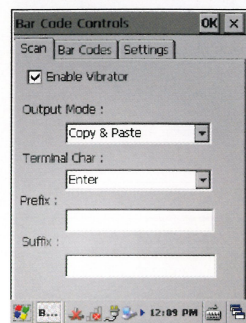
- Wait for 20 seconds in order to initialize the Bluetooth hardware correctly.

- Tap 'Start' -- 'Programs' -- 'Bluetooth' -- 'Bluetooth Manager'. Tap the 'Scan Device' button to search for nearby Bluetooth devices.



5. Brightness Settings

The H25 is equipped with a backlight for both the LCD display and the Keypad. To adjust the backlight brightness, tap 'Start' -- 'Programs' -- 'Controls' -- 'Brightness' to set both LCD and Keypad brightness.



6. Bar Code Settings

The H25 has a bar code scanning module that can be configured fitting your needs. You can configure it to vibrate when scanning, add a Prefix and/or a Suffix to the scanned bar code.

The scanner can also be configured to scan only a specific type of bar code, among many other settings.

To access the Bar Code Settings tap 'Start' -- 'Programs' -- 'Controls' -- 'Bar Code Controls'.

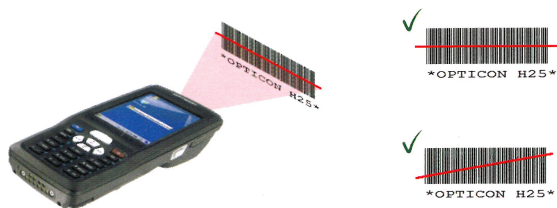
7. Scanning Bar Codes

- Start your application
- Aim the scan window at the bar code.
- Press one of the three Scan Keys.

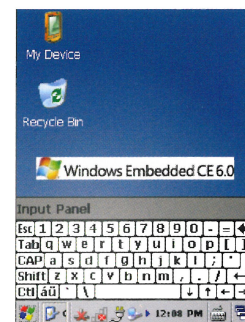
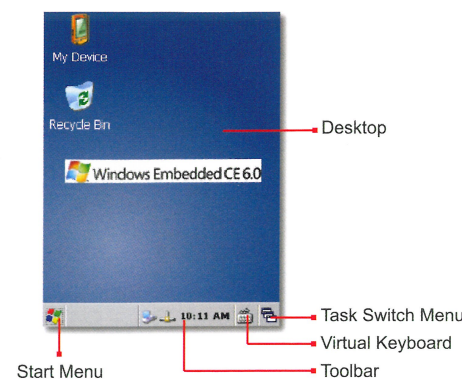
- Aiming: 1D scanner: Aim the laser beam at the center of the bar code under a slight angle. Bar codes can be read from 50 to 650 mm distance.
2D scanner: Aim the laser at the center of the bar code under a slight angle. Bar codes can be read from 55 to 120 mm.

- Check the bar code reading result. You can verify the result of the bar code reading in your application, by beep sound(s) or the LED indicator.

Good scanning positions



Bad scanning positions



8. Using the Applications

- Start an Application:
Double-Tap an application icon on the desktop, or tap 'Start' -- 'Programs' and select one of the applications.

- Close an Application:
Tap the 'X' button on the top right of the Application to close it.

- Using the Virtual Keyboard:
Tap the Virtual Keyboard button, then tap 'Keyboard'. Use the stylus to navigate the keyboard on the Touch Screen.

- Task Switch:
Windows CE can execute multiple applications and switch between them whenever you want. Tap the Task Switch button to bring up a list of currently running applications. Tap the application you want to use, to bring it to the foreground.

Warm Reset

- If an application hangs, initiate Warm Reset to terminate the application.
- A Warm Reset will close all applications and clear the RAM, but all files will be preserved.
- To perform a Warm Reset, press the 'Fn' + 'Alpha' + 'Enter' keys simultaneously and hold them shortly.
- The H25 will perform a Warm Reset.



Try a Warm Reset before you initiate a Cold Reset. All applications will be closed, RAM as well as all files will be cleared if you initiate the Cold Reset. It is strongly recommended to back up your files to Flash ROM, Flash Card or PC.

Cold Reset

- You can use a Cold Reset to (re)initialize the H25 if the Windows CE operating system locks up or in case a Warm Reset has no effect.
- To perform a Cold Reset, press the 'Power' + 'Fn' + 'Enter' keys simultaneously and hold them shortly.
- The H25 will perform a Cold Reset.

User and Product Safety

H25 Terminal

To get the most out of your H25 terminal please consider the following for the safety of you, your data and the H25:

- Do not stare into the laser beam directly or shine it into any persons eyes.
- Never use strong pressure onto the screen or subject it to severe impact as the LCD panel can become cracked and possibly cause personal injury. If the LCD panel is broken, never touch the liquid inside because the liquid irritates the skin.
- Use only the original touch approved AC Adapter with the H25. Use of an unapproved AC Adapter could result in electrical problems, or even cause fire or electrical shock to the user.
- Do not disassemble the H25. Servicing should be done by Authorized Service Partners only. If the device or accessories gets damaged due to wrong handling or when it is opened, warranty is void. In case the warranty seals are broken, warranty is void too.
- Regularly make back-ups of all important data.
- Under no circumstance will the manufacturer be liable for any direct, indirect, consequential or incidental damages arising out of use or inability to use both the hardware and software and/or any data loss, even if the manufacturer has been informed about the possibility of such damages.



H25 Battery Pack

Lithium-ion Battery Packs might get hot, explode, ignite and/or cause serious injury in case of misuse.

Please follow the safety warnings listed below:

- Do not throw the battery into fire. Do not expose the battery to high temperatures.
- Do not connect the positive contacts of the Battery Pack with the negative contacts of the Battery Pack with any metal object.
- Do not carry or store the Battery Pack together with metal objects.
- Do not pierce the Battery pack, or otherwise expose it to strong impacts, shocks or excessive force.
- Do not solder directly onto the battery Pack.
- Do not expose the Battery Pack to liquid or allow the battery contacts to get wet.
- Do not disassemble or modify the Battery Pack. The battery Pack contains safety and protective measures, which, if damaged, may cause the Battery Pack to generate heat, explode or ignite.
- Do not discharge the Battery Pack outside of the H25. Do not use the battery Pack in another device other than the H25 or the CRD25. Other devices can cause abnormal currents to flow and may cause the Battery Pack to become hot, explode or ignite and cause serious injury.
- In the event the Battery Pack leaks and fluid gets into one's eye, do not rub the eye. Rinse well with clean water and immediately seek medical care. If left untreated, the battery fluid can cause damage to the eye.



Do not throw this product in the home waste bin. It contains toxic chemicals and should be treated as such.

For CE, FCC and other DoC's, consult the Regulatory section of www.opticon.com.

This device complies with part 15 of the FCC rule; Operation is subject to the following two conditions: (1) This device may not cause harmful interference. (2) This

