

OPN-4000

GETTING STARTED

BLUETOOTH MODE

HID (Keyboard emulation)



SPP



MFi (Only for the OPN-4000i)



USB MODE HID



DISABLE

USB VCP



ENABLE

RESET SCANNER SETTINGS



BUZZER



DISABLE



ENABLE

BLUETOOTH PIN CODE - SET 0000



1D CCD

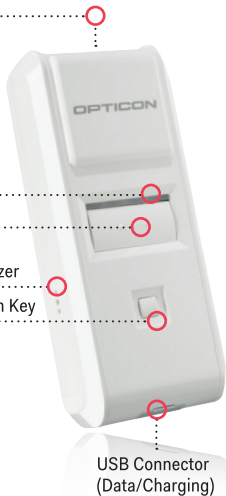
Feedback LED

Trigger Key

Feedback Buzzer

Clear/Function Key

USB Connector
(Data/Charging)





QUICK START INSTRUCTIONS

STEP 1 - SCAN BLUETOOTH MODE

Scan the Bluetooth Default barcode that matches the connection method you wish to use. The recommended mode is HID which is keyboard emulation. On iOS devices, HID allows the on-screen keyboard to be toggled with the OPN-4000's function key. The other modes are SPP and MFi which is serial port emulation and will require an application on the target device. MFi is only available on the OPN-4000i

STEP 2 - HOLD THE FUNCTION KEY FOR 5 SEC

Hold the OPN-4000's function key for 5 seconds until it beeps and begins to flash blue. The OPN-4000 is now discoverable by your host device. This can be cancelled at any time by holding the function key for another 5 sec.

STEP 3 - PERFORM BLUETOOTH SEARCH ON HOST

Use the Bluetooth interface on your host device to search for and select the OPN-4000. The OPN-4000 will beep to indicate success or failure. If you are pairing in Bluetooth-SPP or Apple MFi mode, the OPN-4000 will complete the pairing process as soon as you launch an appropriate application (i.e. OPNterm for iDevices) and open the serial port created by your Bluetooth software. If your host device does not support Simple Pairing, then you may use the barcodes at left to input a PIN code. For information about your OPN-4000, including detailed setup instructions, downloads and more, visit us at: www.opticonusa.com/start/opn or www.opticon.com/service-and-support.aspx

