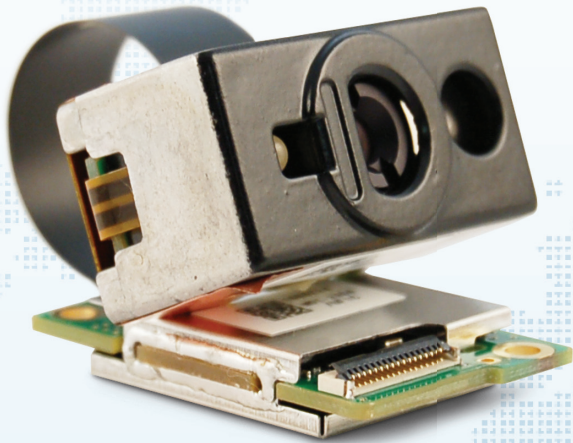


MDI2350

2D CMOS with fixed-focus



+ Features and Benefits

- Fast shutter speed:
improve efficiency with increased motion tolerance
- Adjustable illumination:
easily **scan any surface**
- Class 1 laser:
enhance performance
- Image-capture software:
enable end-user image-capture
- USB or RS232 support:
increase design flexibility
- Two year warranty:
protect your investment

Communication

Serial CMOS, USB-HID or USB-VCP:
17 pin FFC connector

Power

Voltage requirement: 3.3V ± 5%
Current consumption: Max. 390mA

2D Imager Optics

Light source: Aiming laser diode, illumination LEDs
Scan method: CMOS area sensor,
1280x1024 pixels, gray scale
Scan rate: Up to 30 fps
Fixed Focus distance: 120mm
Image format: Bitmap, JPEG
Reading pitch angle: -50 to 0°, 0 to +50°
Reading skew angle: -50 to 0°, 0 to +50°
Reading tilt angle: 360°
Min. resolution at PCS 0.9: 0.127 mm / 5 mil
Min. PCS value: 0.45
Field of view: Horizontal 40°, Vertical 23°
Depth of field: (See Figure)
QR code:
55 - 205 mm / 2.17 - 8.07 in (0.381mm / 15 mil)*,
Code 39:
100 - 150 mm / 3.94 - 45.91in (0.127 mm / 5 mil),
** - 260 mm / 1.97 - 10.24 in (0.20 mm / 7.8 mil),
** Close range DOF depends on the viewing angle and the symbol length

Supported Symbolologies

Barcode (1D): JAN/UPC/EAN incl. add on, Codabar/NW-7, Code 11, Code 39, Code 93, Code 128, GS1-128 (EAN-128), GS1 DataBar (RSS), IATA, Industrial 2of5, Interleaved 2of5, ISBN-ISSN-ISMN, Matrix 2of5, MSI/Plessey, S-Code, Telepen, Tri-Optic, UK/Plessey Postal code: Chinese Post, Intelligent Mail Barcode, Korean Postal Authority code, POSTNET 2D code: Aztec Code, Aztec Runes, Chinese Sensible code, Codablock F, Composite codes, Data Matrix (ECC200/ECO-140), Maxi Code (mode 2~5), MicroPDF41, Micro QR Code, PDF417, QR code

Durability

Temperature in operation: -20 to 55 °C / -4 to 131 °F
Temperature in storage: -40 to 70 °C / -40 to 158 °F

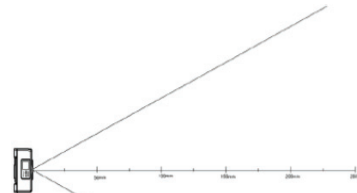
Humidity in operation: 5 - 85% (non-condensing, non-freezing)
Humidity in storage: 5 - 85% (non-condensing, non-freezing)
Ambient light immunity: Fluorescent 10,000 lx max, Direct sun 100,000 lx max, Incandescent 10,000 lx max
Drop test: packed in dummy case 1.5 m / 5 ft drop onto concrete surface
MBTF: 10,000 hours

Physical

Dimensions (w x h x d):
Camera (CMOS)
27.3 x 14.2 x 13.4 mm / 1.1 x 0.56 x 0.53 in,
PCB (decoder board)
18.5 x 4.8 x 30.3 mm / 0.73 x 0.19 x 1.19 in
Extended cable between camera and decoder board: 50mm / 1.97in.
Weight body:
Camera (CMOS) Ca. 7 g / 0.25 oz,
PCB (decoder board) Ca. 4 g / 0.14 oz

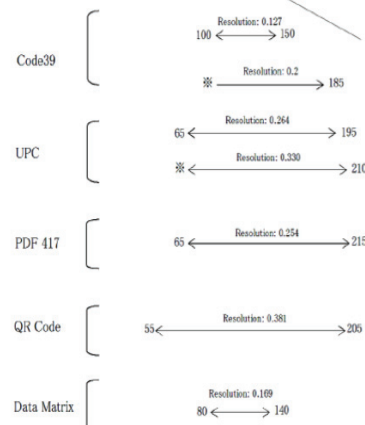
Regulatory & Safety

IEC 60825-1:2007 Class 1,
- CDRH Class I;
RoHS Compliant



Scan Area and Depth of Field:

* Depth of Field depends on view angle and symbol length



Copyright Opticon. All rights reserved. This information is subject to change without prior notice. For availability, contact your local representative.

- **The Netherlands:** Hoofddorp
- **France:** Issy Les Moulineaux
- **Germany:** Dietzenbach
- **Italy:** Villanova di Castenaso (BO)
- **Sweden:** Järfälla
- **United Kingdom:** Luton, Bedfordshire
- **U.S.A.:** Renton, WA
- **Brazil:** São Paulo
- **Japan:** Warabi City
- **Taiwan:** Taipei
- **P.R.China:** Shanghai
- **Australia:** West Ryde

Opticon, Inc.
2220 Lind Avenue SW
Suite 100
Renton, WA 98057
Toll Free: (800) 636-0090
Local: (425) 651-2120
Fax: (425) 454-0865
Email: sales@opticonusa.com

OPTICON USA

WWW.OPTICONUSA.COM